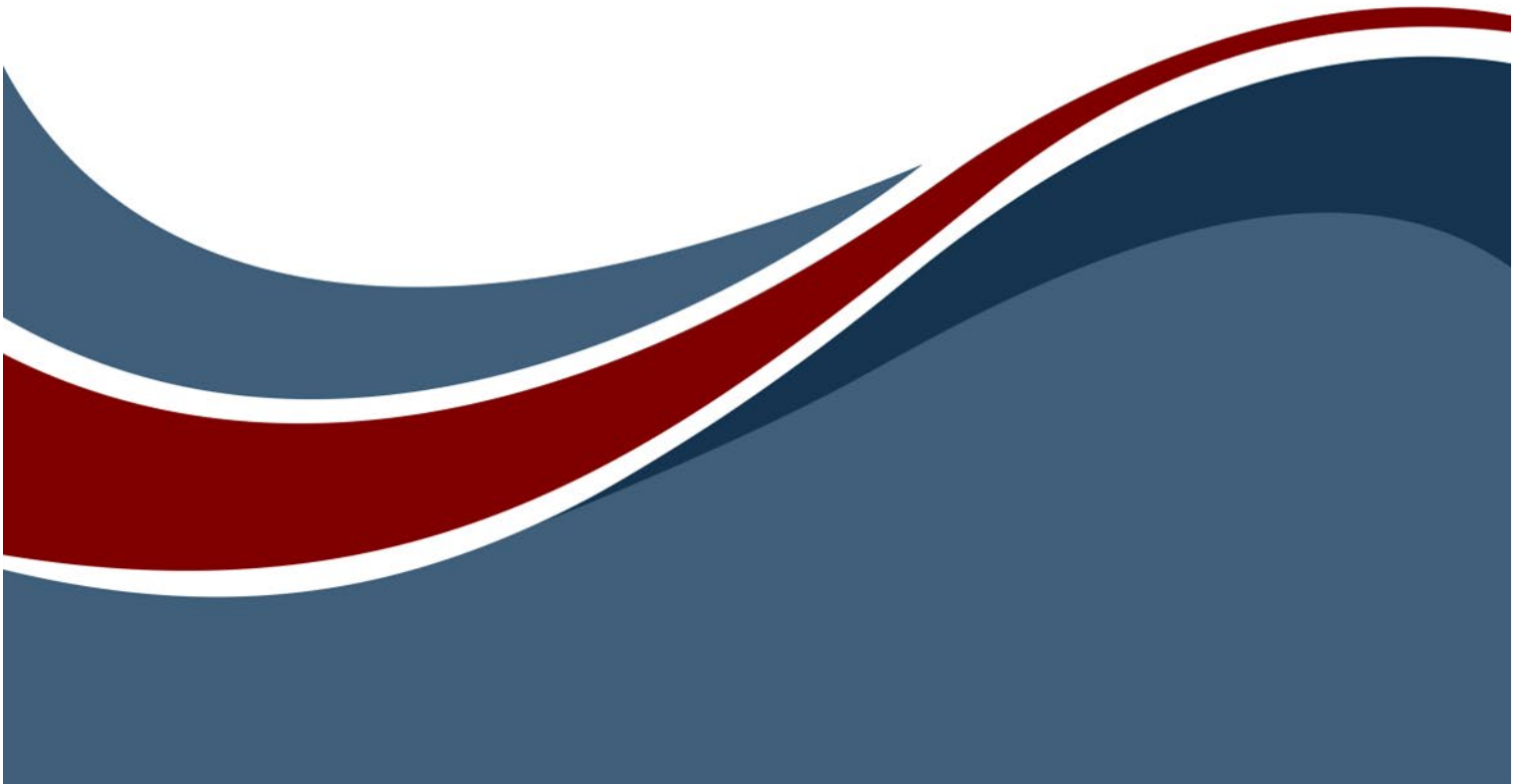




PowerPoint® Connector Guide



PowerPoint® Connector Guide

Copyright © 2016-2024 Zuken Vitech Inc. All rights reserved.

No part of this document may be reproduced in any form, including, but not limited to, photocopying, language translation, or storage in a data retrieval system, without Vitech's prior written consent.

Restricted Rights Legend

Use, duplication, or disclosure by the U.S. Government is subject to restrictions as set forth in the applicable GENESYS End-User License Agreement and in subparagraph (c)(1)(ii) of the Rights in Technical Data and Computer Software clause at DFARS 252.277-7013 or subparagraphs (c)(1) and (2) of the Commercial Computer Software - Restricted Rights at 48 CFR 52.227-19, as applicable, or their equivalents, as may be amended from time to time.

Zuken Vitech Inc.

2270 Kraft Drive, Suite 1600
Blacksburg, Virginia 24060
+1 540 951 3322 | Fax: +1 540 951 8222
www.vitechcorp.com

Customer Support:

+1 540 951 3999 | support@vitechcorp.com



is a trademark of Zuken Vitech Inc. and refers to all products in the GENESYS software product family.

The license and/or entitlement management portions of GENESYS are based upon one or more of the following copyrights: Sentinel® EMSaaS, Sentinel® LDK. Copyright © 2024 Thales. All rights reserved.

Sentinel® is a registered trademark of Thales. Other product names mentioned herein are used for identification purposes only and are trademarks of their respective companies.

Publication Date: December 2024

TABLE OF CONTENTS

Preface vi

GENESYS POWERPOINT CONNECTOR INSTALLATION AND MANAGEMENT 1

 1.1 Installing the PowerPoint Connector 1

 1.2 Managing the PowerPoint Connector 3

CONNECTING POWERPOINT WITH GENESYS..... 7

 1.3 Connecting to GENESYS from PowerPoint 7

 1.4 The GENESYS Ribbon in PowerPoint 8

DEVELOPING INDIVIDUAL GRAPHICS FOR INSERTION INTO A PRESENTATION 10

 1.5 Using Advanced “Show all options” to Control Individual Diagrams 10

LIST OF FIGURES

Figure 1 Sample PowerPoint Connector..... vi

Figure 2 PowerPoint Connector Installer, Step 1 1

Figure 3 PowerPoint Connector Installer, Step 2..... 2

Figure 4 PowerPoint Connector Installer, Step 3..... 2

Figure 5 PowerPoint Connector Installer, Step 4..... 3

Figure 6 PowerPoint GENESYS and FILE Tabs 4

Figure 7 PowerPoint FILE tab, Options Menu Item 4

Figure 8 PowerPoint Options Dialog, Add-Ins Menu Item 5

Figure 9 PowerPoint Add-Ins Dialog, Manage COM Add-Ins Option 6

Figure 10 COM Add-Ins Dialog, Managing the GENESYS Connector..... 7

Figure 11 GENESYS Login in PowerPoint Using Ribbon Button 7

Figure 12 PowerPoint with GENESYS Login..... 8

Figure 13 GENESYS Ribbon in PowerPoint..... 8

Figure 14 GENESYS Diagrams Dialog Box..... 9



CUSTOMER RESOURCE OPTIONS

Supporting users throughout their entire journey of learning model-based systems engineering (MBSE) is central to Vitech’s mission. For users looking for additional resources outside of this document, please refer to the links below. Alternatively, all links may be found at www.vitechcorp.com/online-resources/.



[Webinars](#)

Immense, on-demand library of webinar recordings, including systems engineering industry and tool-specific content.



[Screencasts](#)

Short videos to guide users through installation and usage of GENESYS.



[A Primer for Model-Based Systems Engineering](#)

Our free eBook and our most popular resource for new and experienced practitioners alike.



[Help Files](#)

Searchable online access to GENESYS help files.



[Technical Papers](#)

Library of technical and white papers for download, authored by Vitech systems engineers.



[Technical Support](#)

Frequently Asked Questions (FAQ), support-ticket web form, and information regarding email, phone, and chat support options.

PowerPoint® Connector Guide

PREFACE

This PowerPoint Connector Guide provides information on how to install and use a PowerPoint extension developed to connect the GENESYS™ database to Microsoft® PowerPoint®. The connector is a .NET application that extends the PowerPoint application provided in Microsoft Office® 2013, 2016, 2019, and 2021. Figure 1 displays the extended blank PowerPoint presentation.

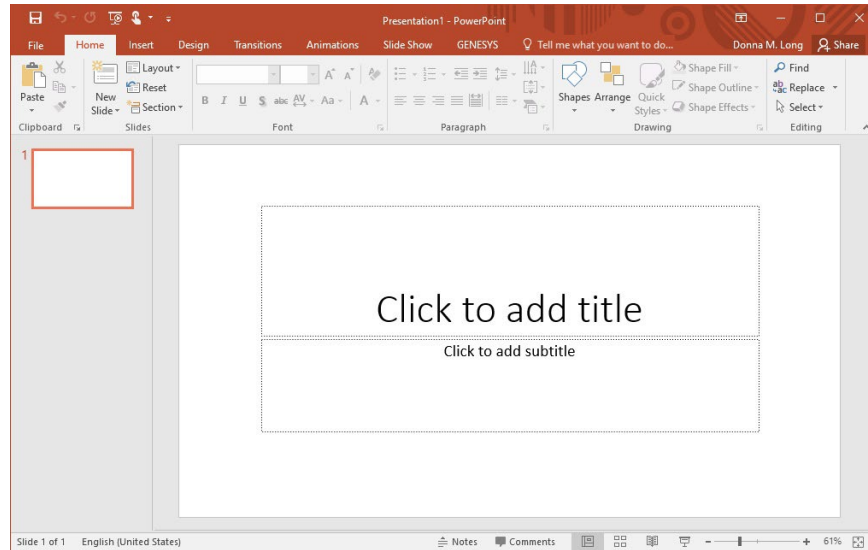


Figure 1 Sample PowerPoint Connector

This guide describes the process to import and add the extension in PowerPoint, how to interface directly with the GENESYS repository and individual projects in the repository, how to use the features in the PowerPoint extension to export data out of the GENESYS data repository, and how to use the dashboard features coded into the PowerPoint extension.

This guide is intended to augment the Model-Based Systems Engineering (MBSE) with GENESYS training course and the reference material provided with GENESYS. The goal of this guide is to expose the user to the PowerPoint extension and thereby extend the use and application of GENESYS for both system design and development and project management associated with a system development project.

The following additional resources are available for use with this guide:

- For descriptions of GENESYS including database classes and folders, different views, diagram notation, and the mechanics of entering data into GENESYS, the reader is referred to the GENESYS Help>Documentation feature in the toolset.
- For the definition of schema terms, the reader is referred to the GENESYS schema, which contains descriptions for each schema entity. The schema is accessed in the GENESYS Software.
- For application of GENESYS to system and architecture design, the reader is referred to the GENESYS System Definition Guide (SDG) and Architecture Definition Guide (ADG) supplied with the GENESYS software installation.

GENESYS POWERPOINT CONNECTOR INSTALLATION AND MANAGEMENT

1.1 Installing the PowerPoint Connector

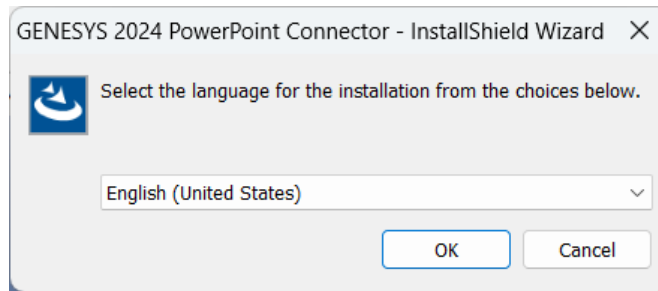
The GENESYS PowerPoint Connector is installed via a standard, familiar Windows setup program. Please note that separate installers are available for either 64-bit or 32-bit Windows and PowerPoint operating environments. The connector runs in Microsoft PowerPoint 2013, 2016, 2019, and 2021.

There are separate files for PowerPoint Connector depending on the architecture of the computer in which the software is being installed. The files are named:

- “GENESYS2024PowerPointConnector_x86.exe” (for 32-bit Windows operating systems) and
- “GENESYS2024PowerPointConnector_x64.exe” (for 64-bit Windows operating systems).

Double-click the installer .exe file to begin the installation.

Select the language to use. This is both the language of the installer and the language that GENESYS will be set to use. Click “OK.”



Click “Next.”



Figure 2 PowerPoint Connector Installer, Step 1

PowerPoint® Connector Guide

Review and accept the licensing agreement terms and click “Next.”

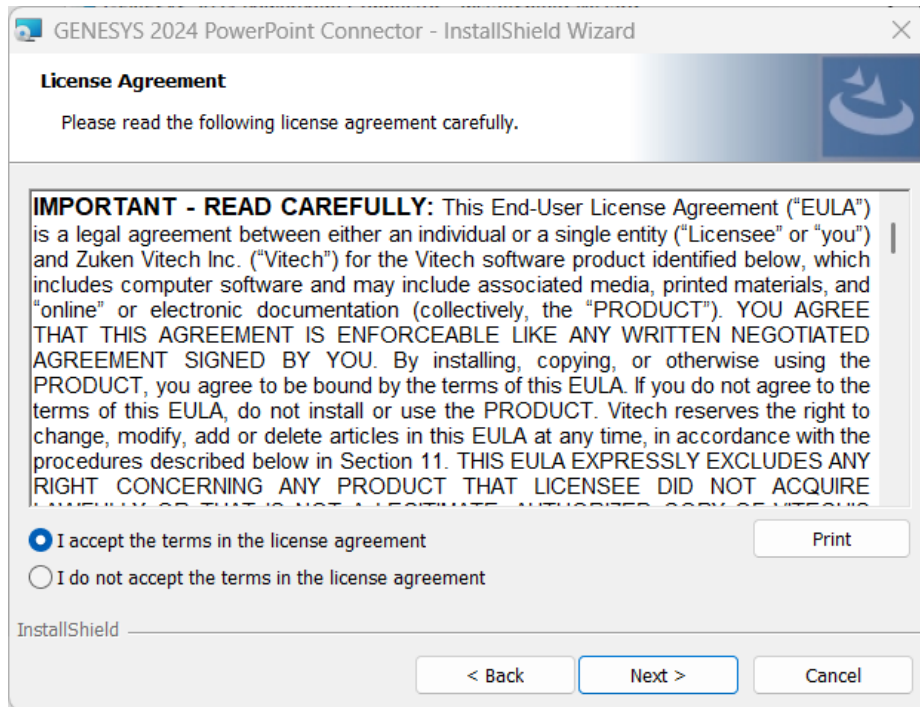


Figure 3 PowerPoint Connector Installer, Step 2

Click “Install” to begin the installation.

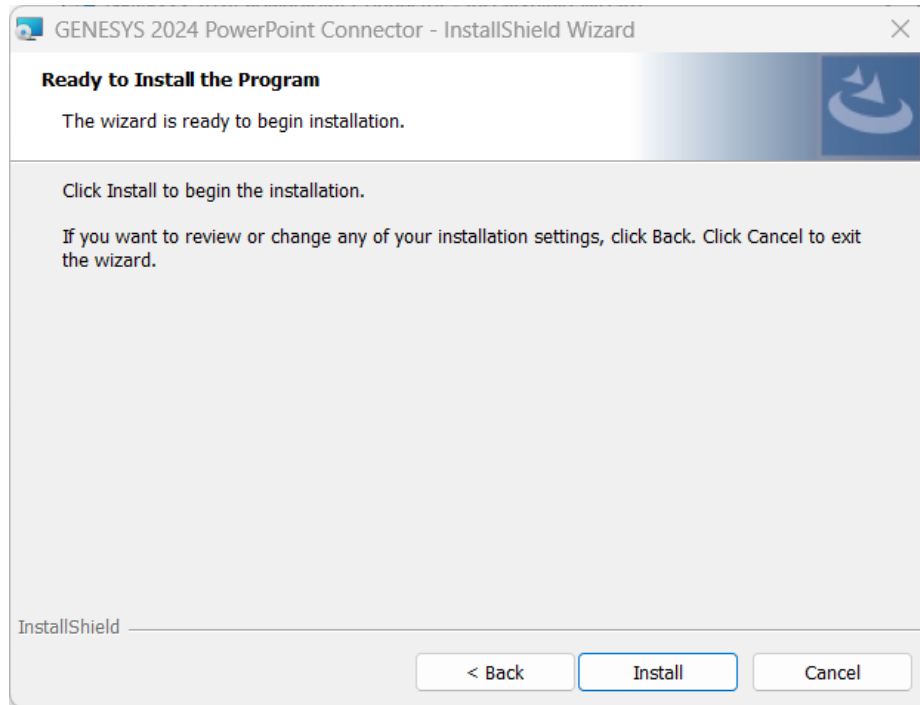


Figure 4 PowerPoint Connector Installer, Step 3

PowerPoint® Connector Guide

The setup program will run and install the PowerPoint connector. When the process is complete, simply click “Finish” to complete the installation. The connector will now be available for use in any PowerPoint presentation.

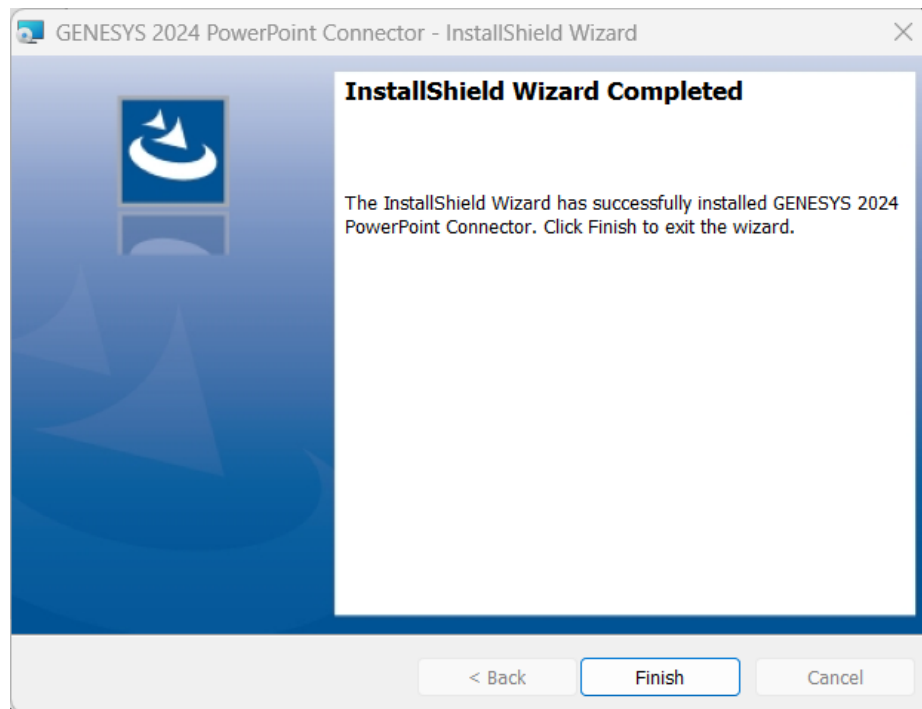


Figure 5 PowerPoint Connector Installer, Step 4

1.2 Managing the PowerPoint Connector

Add-ins to PowerPoint are sometimes disabled by customers. Note that for our connector to work, it may be necessary to adjust the settings by enabling PowerPoint to use add-ins.

Once installed, the GENESYS PowerPoint connector can be managed via standard Microsoft Office add-in tools. Note that the steps below apply to Microsoft PowerPoint 2016 installations and may vary slightly in different versions of PowerPoint.

PowerPoint® Connector Guide

The extension to GENESYS in PowerPoint is accessed via the “GENESYS” tab in an open presentation, as shown in the figure below. To manage the connector, first click the “FILE” tab.

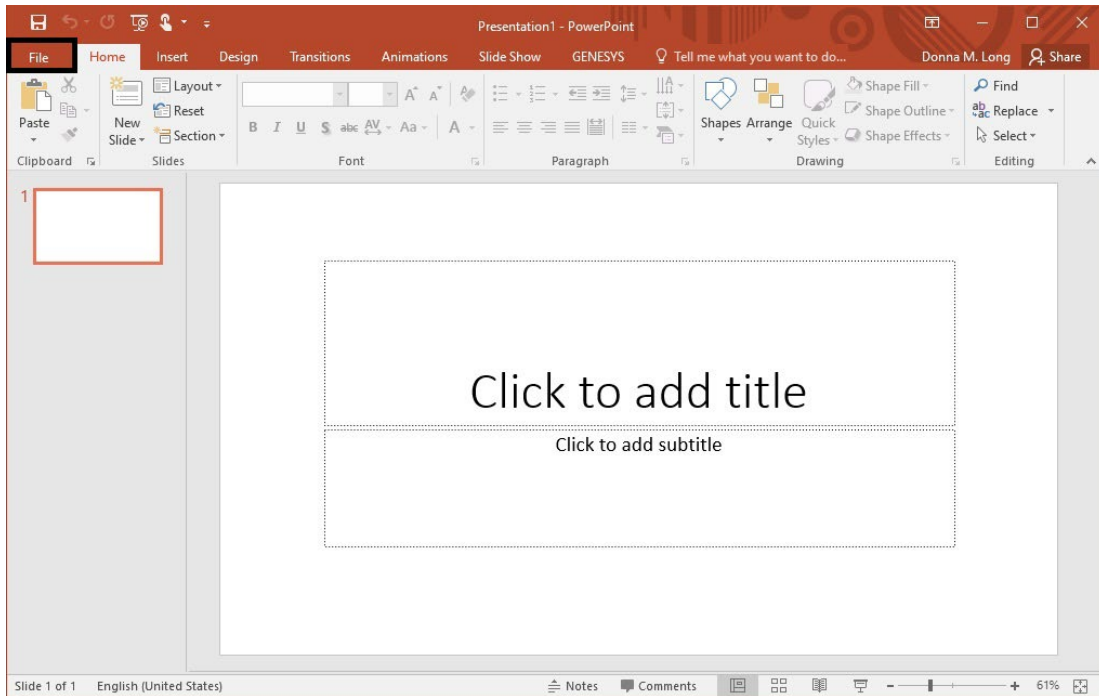


Figure 6 PowerPoint GENESYS and FILE Tabs

Once in the “FILE” tab, click the “Options” item from the menu on the left.

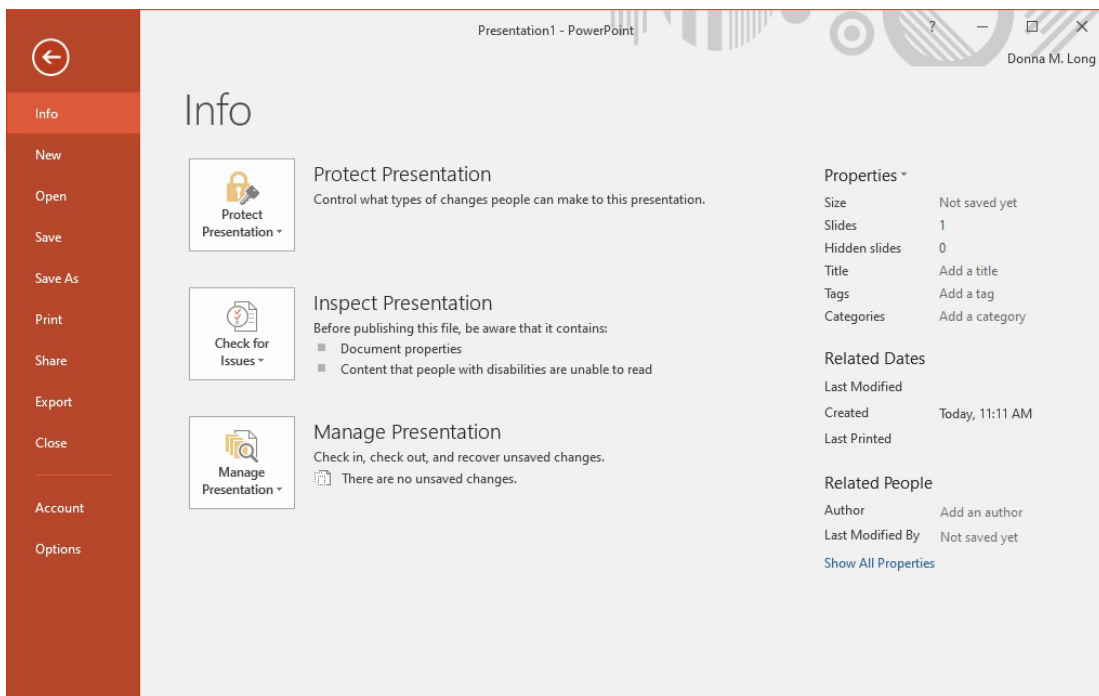


Figure 7 PowerPoint FILE tab, Options Menu Item

PowerPoint® Connector Guide

In the Options dialog that opens, select the “Add-Ins” option from the menu on the left.

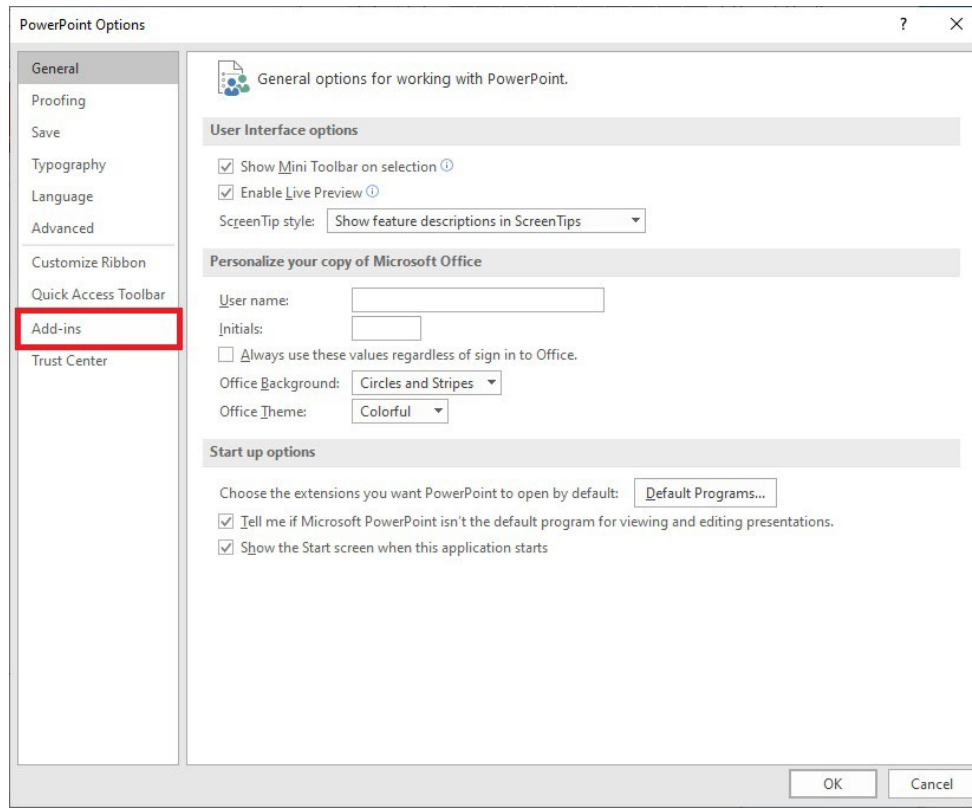


Figure 8 PowerPoint Options Dialog, Add-Ins Menu Item

PowerPoint® Connector Guide

In the Add-Ins dialog that opens, select “COM Add-ins” from the “Manage:” combo box at the bottom, then click the “Go...” button.

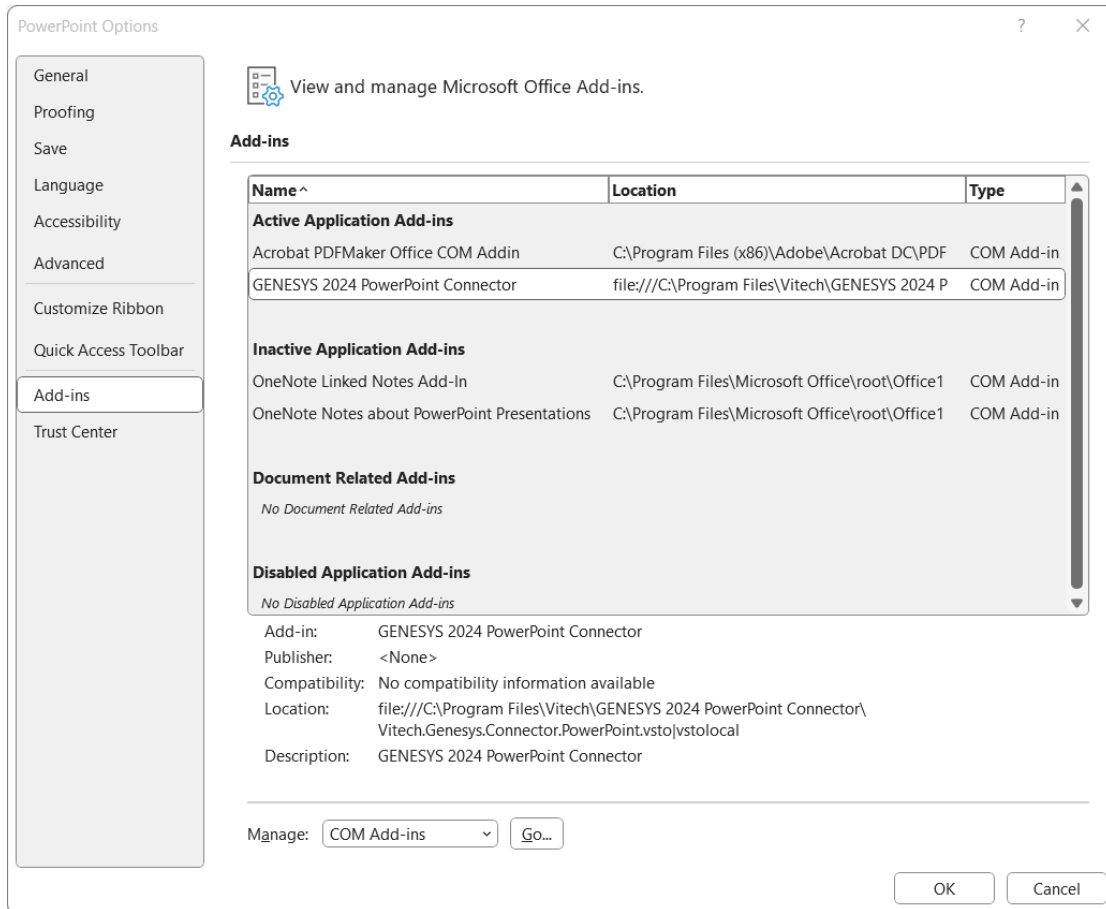


Figure 9 PowerPoint Add-Ins Dialog, Manage COM Add-Ins Option

PowerPoint® Connector Guide

In the COM Add-Ins dialog that opens, select the GENESYS PowerPoint Connector item. Any of three actions can be performed:

- 1) The GENESYS Connector can be unchecked. Clicking “OK” will then disable the connector from running in workbooks.
- 2) If the GENESYS Connector is unchecked, it can be checked. Clicking “OK” will then enable the connector to run in workbooks.
- 3) The GENESYS Connector can be selected, and the “Remove” button can be clicked. The connector will be uninstalled.

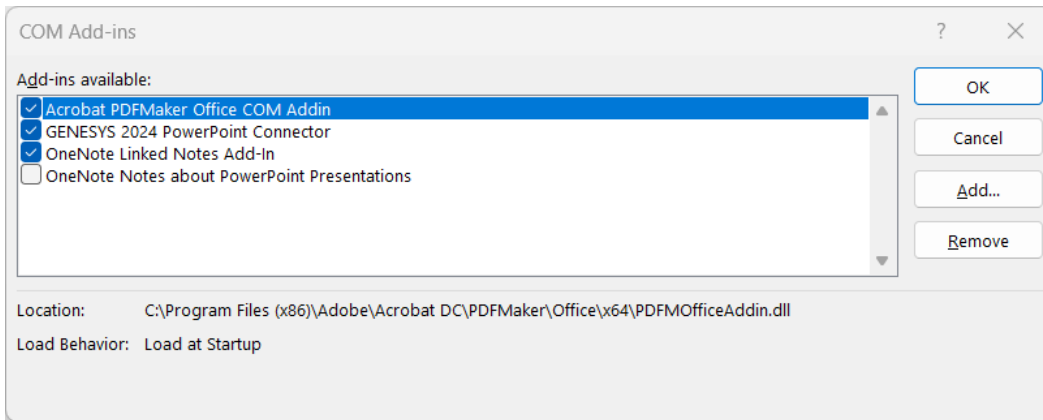


Figure 10 COM Add-Ins Dialog, Managing the GENESYS Connector

CONNECTING POWERPOINT WITH GENESYS

1.3 Connecting to GENESYS from PowerPoint

With PowerPoint open on the desktop, navigate to a blank presentation, or open a blank presentation. Select the GENESYS tab on the ribbon. Then ‘connect’ PowerPoint by logging in to GENESYS using the icon on the left-hand side of the ribbon.

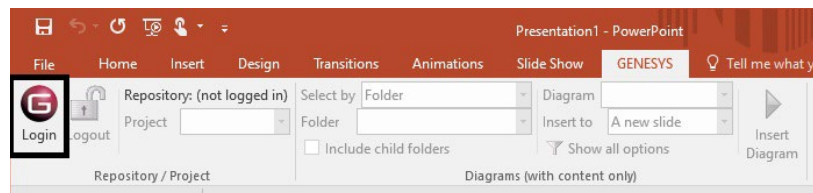


Figure 11 GENESYS Login in PowerPoint Using Ribbon Button

PowerPoint® Connector Guide

Clicking on the GENESYS Login button will launch and bring up the GENESYS login screen.

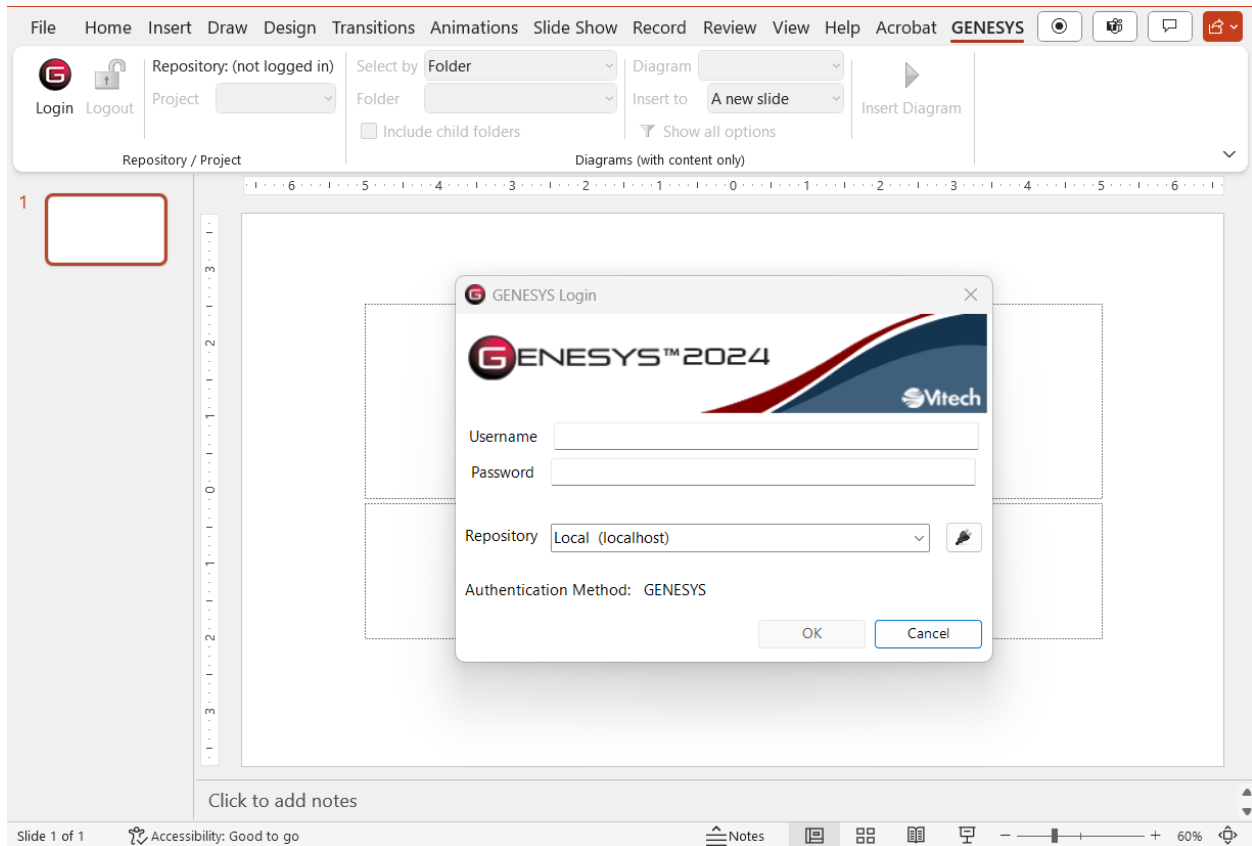


Figure 12 PowerPoint with GENESYS Login

Log in to GENESYS using the appropriate Username and Password. This connects PowerPoint with the Repository. Once logged into GENESYS, the controls on the GENESYS ribbon will be “active” and no longer be grayed out.

1.4 The GENESYS Ribbon in PowerPoint

There are several sections on the GENESYS ribbon in PowerPoint which are used to control access to the GENESYS database.



Figure 13 GENESYS Ribbon in PowerPoint

PowerPoint® Connector Guide

The Repository / Project section controls access to a particular system design project in the GENESYS repository. Within this section the “Project” selection provides a drop-down menu where the user can select the project within the database repository from which diagrams will be extracted. This is the project from which all diagrams will be associated in PowerPoint.

The “Diagrams” section of the ribbon allows the user to select diagrams from the model in GENESYS to be displayed on PowerPoint slides. Each control in this section is described below:

- **Select by:** Provides a drop-down selection where the user can pick selections either by Folder or Package.
- **Folder:** Provides a drop-down selection of Class Folders or Package Folders that have been created in the project repository.
- **Include child folders:** Provides the option of iterating through all the sub-folders for diagram creation.
- **Diagram:** Provides a drop-down selection of diagram types to choose from for extract and placement in the PowerPoint presentation.
- **Insert:** Provides the option of inserting a new slide or creating the diagram on the current slide.

When using the selections in the ribbon, the connector will iterate through all the entities in the folder selected and develop the diagram selected for each entity.

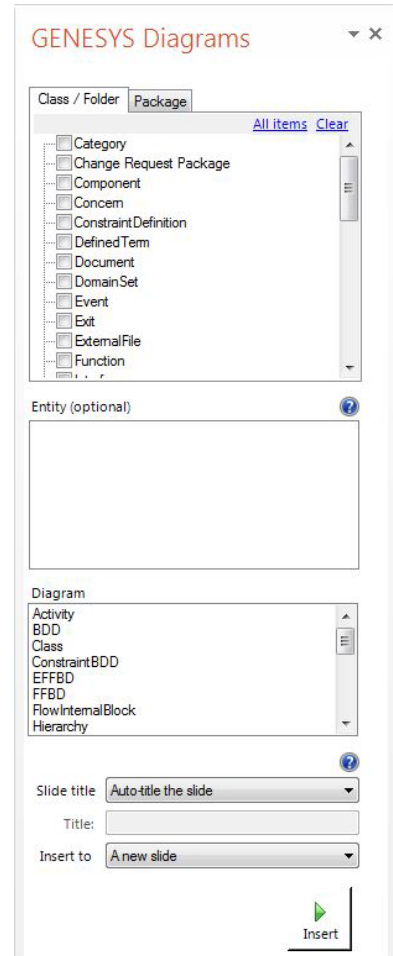


Figure 14 GENESYS Diagrams Dialog Box

DEVELOPING INDIVIDUAL GRAPHICS FOR INSERTION INTO A PRESENTATION

1.5 Using Advanced “Show all options” to Control Individual Diagrams

The user can select individual diagrams for individual slides in a PowerPoint presentation by expanding the options available in the ribbon. To do this, click or select the “Show all options” label on the ribbon, this will open a dialog box to right hand side of the PowerPoint screen. This dialog box is used to either query (or extract) information from the database as well as import or update information into the database.

The dialog box has four main sections. The top box provides for selection of the Class and Folder from which to create the diagram.

When the class or folder is selected, the second window is populated with the entities of that class. Pick a single entity by clicking on the entity. Or select multiple Entities by holding down the <Ctrl> key.

The Diagram box allows the user to select the diagrams to be provided for the entity or entities selected in the Entity box. To select multiple diagrams, use the <Ctrl> key. If a diagram is selected that is not provided or not appropriate for the entity, an error message is generated. Once the error message is read, close the error message and change the selection as needed.

The bottom section of the dialog box provides controls for titling and inserting slides. The “Slide title” selection has two alternatives: “Auto-title the slide” and “Use a custom title.” If “Use a custom title” is selected, insert the desired title in the text box. Finally, in the “Insert to” selection create the graphic diagram either as “A new slide” or on the current slide. If more than one entity and/or more than one diagram has been selected then, there will be multiple slides created for each diagram.

Once all the selections have been made, create the slides for the PowerPoint presentation by clicking on the “Insert” radio button at the bottom of the dialog box.

THIS PAGE INTENTIONALLY BLANK



2270 Kraft Drive, Suite 1600
Blacksburg, Virginia 24060
+1 540 951 3322 | Fax: +1 540 951 8222
www.vitechcorp.com

Customer Support:
+1 540 951 3999 | support@vitechcorp.com