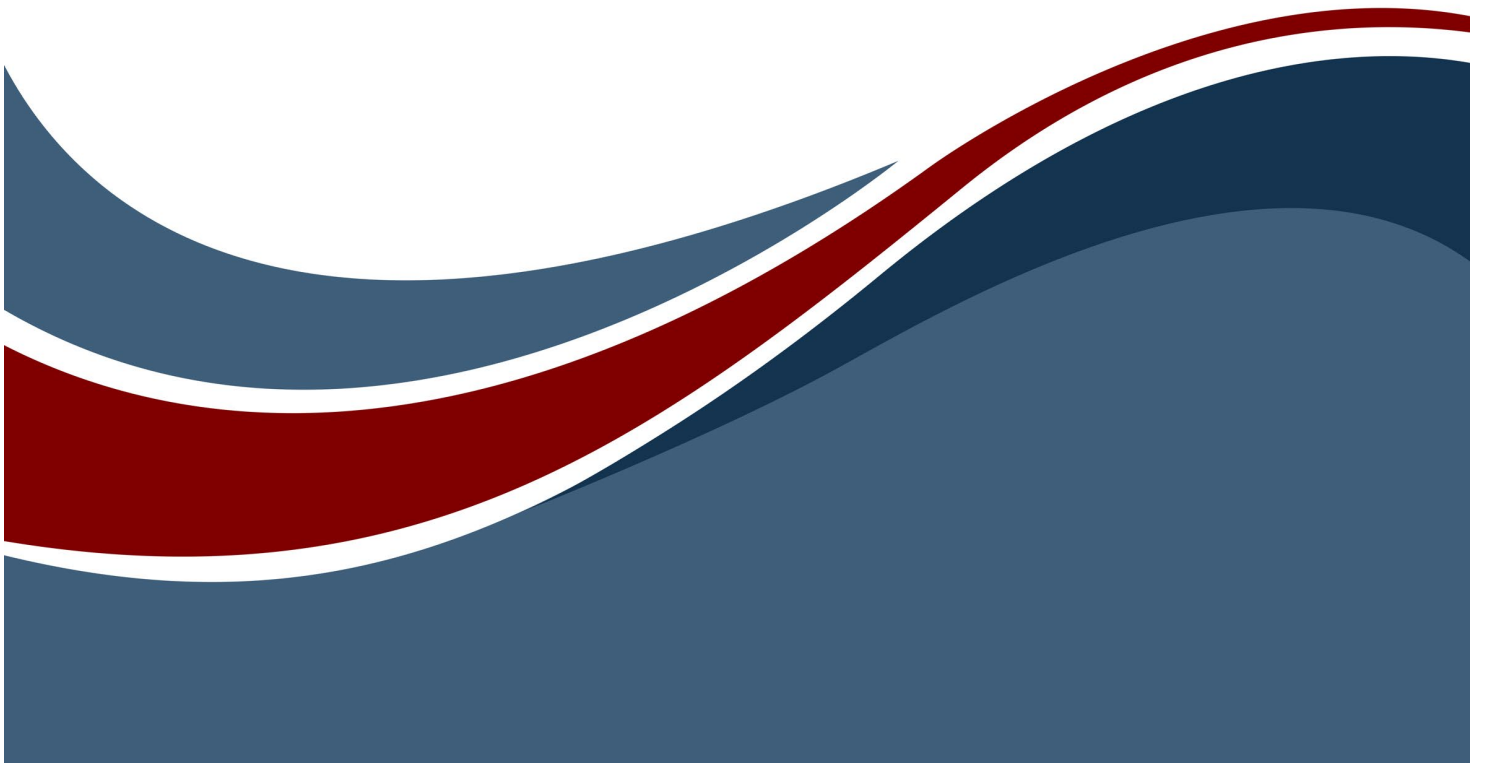




What is
New in
GENESYS 2023



What is New in GENESYS 2023

Copyright © 2016-2023 Zuken Vitech Inc. All rights reserved.

No part of this document may be reproduced in any form, including, but not limited to, photocopying, language translation, or storage in a data retrieval system, without Vitech's prior written consent.

Restricted Rights Legend

Use, duplication, or disclosure by the U.S. Government is subject to restrictions as set forth in the applicable GENESYS End-User License Agreement and in subparagraph (c)(1)(ii) of the Rights in Technical Data and Computer Software clause at DFARS 252.277-7013 or subparagraphs (c)(1) and (2) of the Commercial Computer Software - Restricted Rights at 48 CFR 52.227-19, as applicable, or their equivalents, as may be amended from time to time.

Zuken Vitech Inc.

2270 Kraft Drive, Suite 1600
Blacksburg, Virginia 24060
540.951.3322 | FAX: 540.951.8222
Customer Support: support@vitechcorp.com
www.vitechcorp.com



GENESYS™ is a trademark of Zuken Vitech Inc. and refers to all products in the GENESYS software product family.

Other product names mentioned herein are used for identification purposes only, and may be trademarks of their respective companies.

Publication Date: June 2023

TABLE OF CONTENTS

WHAT IS NEW IN GENESYS 2023..... 1

 GENESYS Product Line Changes..... 1

 Independent Views Container 2

 Table Views 2

 View Lists..... 3

 Model Obfuscator 6

 Zoom Diagram to Fit Window 8

 SBE Vision Integration..... 8

 Performance Improvements 10

 Automatic Licensing Updates 11

 Minor Improvements – Bulk Operation Undo/Redo..... 12

 API Changes..... 12

 GENESYS 2023 Resolved Issues..... 13

 GENESYS 2022 SP2 Resolved Issues 16

 GENESYS 2022 SP1 Resolved Issues 18



CUSTOMER RESOURCE OPTIONS

Supporting users throughout their entire journey of learning model-based systems engineering (MBSE) is central to Vitech’s mission. For users looking for additional resources outside of this document, please refer to the links below. Alternatively, all links may be found at www.vitechcorp.com/online-resources/.



[Webinars](#)

Immense, on-demand library of webinar recordings, including systems engineering industry and tool-specific content.



[Screencasts](#)

Short videos to guide users through installation and usage of GENESYS.



[A Primer for Model-Based Systems Engineering](#)

Our free eBook and our most popular resource for new and experienced practitioners alike.



[Help Files](#)

Searchable online access to GENESYS help files.



[Technical Papers](#)

Library of technical and white papers for download, authored by Vitech systems engineers.



[Technical Support](#)

Frequently Asked Questions (FAQ), support-ticket web form, and information regarding email, phone, and chat support options.

WHAT IS NEW IN GENESYS 2023

GENESYS 2023, the latest iteration of Vitech’s flagship MBSE platform, introduces new capabilities aimed at improving usability and performance, making GENESYS easier to navigate and streamlining common operations. Most importantly with the release of GENESYS 2023, the GENESYS product portfolio has been changed to better meet the needs of the user community.

GENESYS Product Line Changes

The GENESYS product line now consists of GENESYS, GENESYS Pro, GENESYS University Edition, and GENESYS Server. The table below summarizes the capabilities included in each edition of the GENESYS client. Customers can mix GENESYS and GENESYS Pro in the same environment and can work concurrently on the same project with either edition. GENESYS University Edition is a special version targeted at educational institutions and is not suitable for commercial use.

Product	GENESYS	GENESYS Pro	University Edition
Comprehensive Systems Design Language (CSDL)	✓	✓	✓
Traditional Views	✓	✓	✓
SysML Views	✓	✓	✓
Table Views	✓	✓	✓
Essential Capabilities (reporting, scripting, etc.)	✓	✓	✓
Mission Capability Architecture / DoDAF	✓	✓	✓
Basic Connectors			
MS Office Connectors (Excel, PowerPoint, Project)	✓	✓	✓
DOORS Connector	✓	✓	✓
SBE Vision Connector	✓	✓	✓
Analytical Tools			
Behavior Simulation		✓	✓
Ansys ModelCenter Connector		✓	✓
MATLAB Connector		✓	✓
SIMULINK Connector		✓	✓
Restrictions (local repository)			
Full Client Connections	1	1	Unlimited
Connector/API Connections	5	5	Unlimited
Entity Limitations (per project)	Unlimited	Unlimited	10,000

GENESYS and GENESYS Pro have a local repository for standalone usage. However, live collaboration requires an instance of GENESYS Server as the local repository can no longer be shared.

GENESYS Server now comes in two different configurations. The table below outlines the new packaging. Universal Connection Licenses (UCLs) are needed for each concurrent connection to the GENESYS Server. This includes connections from GENESYS/Pro clients as well as other connections made via any of the APIs. Note that only GENESYS Server includes OSLC and the REST API.

What is New in GENESYS 2023

Product	GENESYS Server 25	GENESYS Server 100
Works with SQL Express*	✓	✓
Works with MS SQL Server	✓	✓
# of UCLs	25	100
.NET/OSLC/REST APIs	✓	✓
*Although SQL Express is supported, it is not recommended for use with GENESYS Server.		

Existing GENESYS Spectrum users will be migrated to GENESYS Pro. If you currently own GENESYS Essentials, CORE, or are using the built-in collaboration server in GENESYS Spectrum, please contact your account rep to discuss your migration options.

Independent Views Container

GENESYS 2023 introduces both *Table Views* and *View Lists* to improve usability and navigation of the model. Unlike the standard GENESYS views which are entity centric, *Table Views* and *View Lists* are not owned by entities and therefore need a home in the GENESYS Project Explorer. In GENESYS 2023, a new container has been added to store, organize, and manage these views. Search capabilities have been updated to include views in the Independent Views container in the search results.

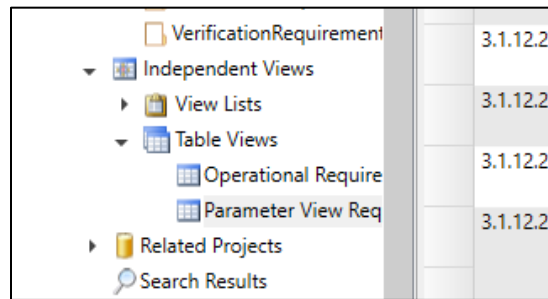


Table Views

The Excel Connector has been one of the most-liked capabilities of earlier editions of GENESYS. Through the connector, users can interact with model data in tabular form, using Excel to enter or extract data from a GENESYS model. With GENESYS 2023, *Table Views* are a native part of the GENESYS user interface, giving you the same capabilities as the Excel Connector but with two key advantages:

- *Table views* are generated and visible directly within GENESYS.
- Model changes are updated in real-time, meaning that *Table Views* are always consistent with the underlying model.

What is New in GENESYS 2023

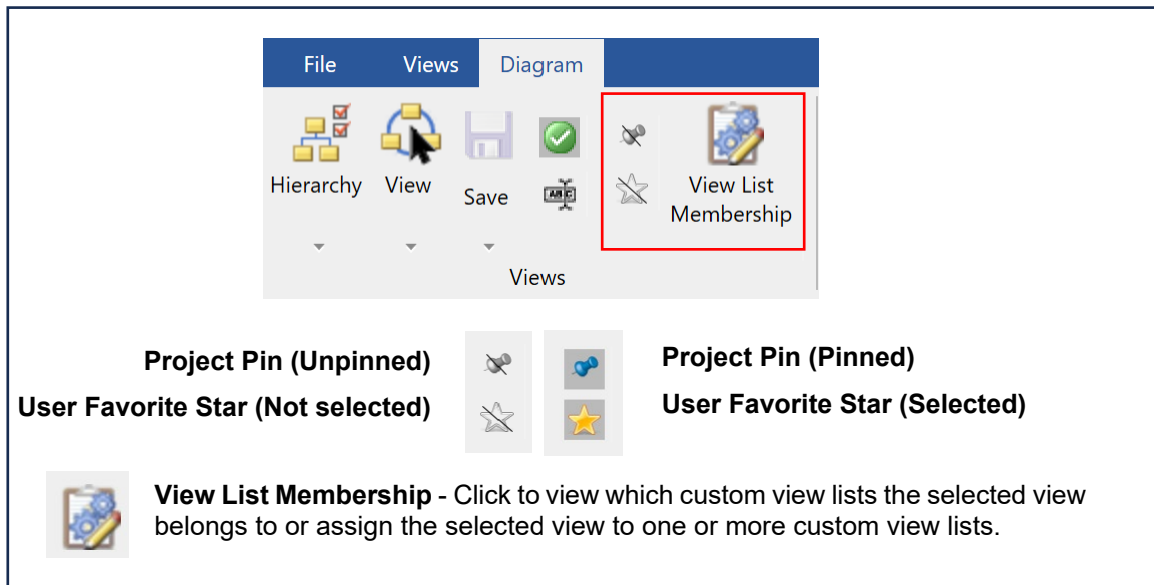
number	name	description	verified by Targets	description	built in Targets	built from Targets	response Targets	generated Targets	specified by Targets	description
1.1.13.141	Geographical coverage	Type of geographic area covered by the definition or agreement by particular parties.	Geographical coverage	Geographical coverage	Geographical coverage is implemented as a concrete class in the abstract UMLParameter class.	1.1.13.141				Geographical coverage
1.1.13.141	Geographical coverage	Enumeration of the possible kinds of Geographical coverage.	Geographical coverage	Geographical coverage is implemented as an enumeration string attribute in the UMLParameter class.	1.1.13.141					Geographical coverage
1.1.13.142	Location	Specific location of the generic class in which a location is required to be located.	Location	Location	Location is implemented as a concrete class in the abstract UMLParameter class. The...	1.1.13.142				Location
1.1.13.142	Location	Enumeration of the possible kinds of location that are applicable to a Location. The...	Location	Location is implemented as an enumeration string attribute in the UMLParameter class.	1.1.13.142					Location
1.1.13.143	Location	Abstract grouping used to identify elements that are allowed to be associated with a Location.	Location	Location is implemented as an enumeration string attribute in the UMLParameter class.	1.1.13.143					Location
1.1.13.144	Measurement	Abstract grouping for elements that are measured by using a Measurement.	Measurement	Measurement is implemented as an enumeration string attribute in the UMLParameter class.	1.1.13.144					Measurement
1.1.13.145	Measurement	Enumeration of the possible kinds of measurement that are applicable to a Measurement. The...	Measurement	Measurement is implemented as an enumeration string attribute in the UMLParameter class.	1.1.13.145					Measurement
1.1.13.146	Mitigation	A dependency relating a Security Control to a Mitigation.	Mitigation	Mitigation is implemented as a relationship between the UMLParameter class and the UMLParameter class.	1.1.13.146					Mitigation
1.1.13.147	Mitigation	Enumeration of the possible kinds of mitigation that are applicable to a Mitigation. The...	Mitigation	Mitigation is implemented as an enumeration string attribute in the UMLParameter class.	1.1.13.147					Mitigation
1.1.13.148	Ownership	Abstract grouping relating a Security Control to an ownership relationship.	Ownership	Ownership is implemented as a relationship between the UMLParameter class and the UMLParameter class.	1.1.13.148					Ownership
1.1.13.149	Ownership	Enumeration of the possible kinds of ownership that are applicable to an ownership relationship. The...	Ownership	Ownership is implemented as an enumeration string attribute in the UMLParameter class.	1.1.13.149					Ownership
1.1.13.150	Risk	A type that represents a situation involving exposure to danger of unfavorable outcomes.	Risk	Risk is implemented as a concrete class in the UMLParameter class. It is a general...	1.1.13.150					Risk

Screen showing an autogenerated, fully editable Table View directly in GENESYS 2023

View Lists

One of the key strengths of GENESYS and a significant differentiator from other MBSE tools on the market is that GENESYS autogenerates diagrams, or views, from the data captured in the model. Due to this design, GENESYS ensures consistency across all diagrams and layers of your architecture. GENESYS can also save multiple views of the same diagram, reflecting differences needed to better communicate diagrammatic aspects or content in a tailored way for the target audience. To better organize the multitude of views that exist in a GENESYS model, GENESYS 2023 includes several new features.

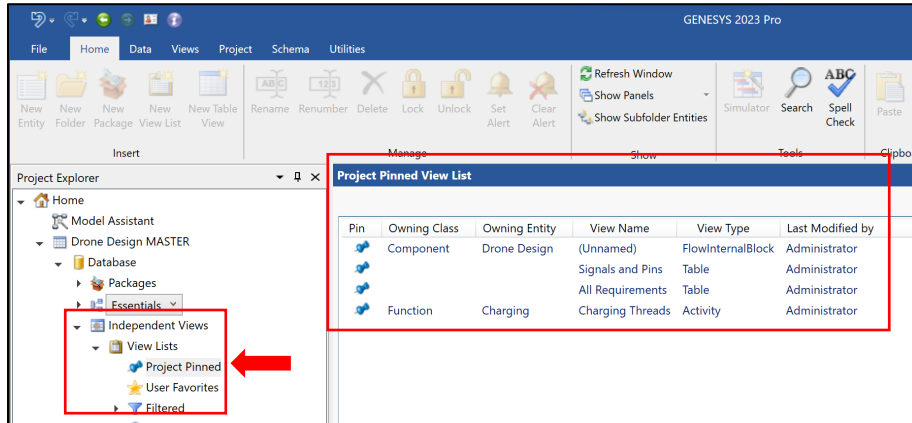
Three buttons/actions have been added to the Views section of the GENESYS 2023 ribbon.



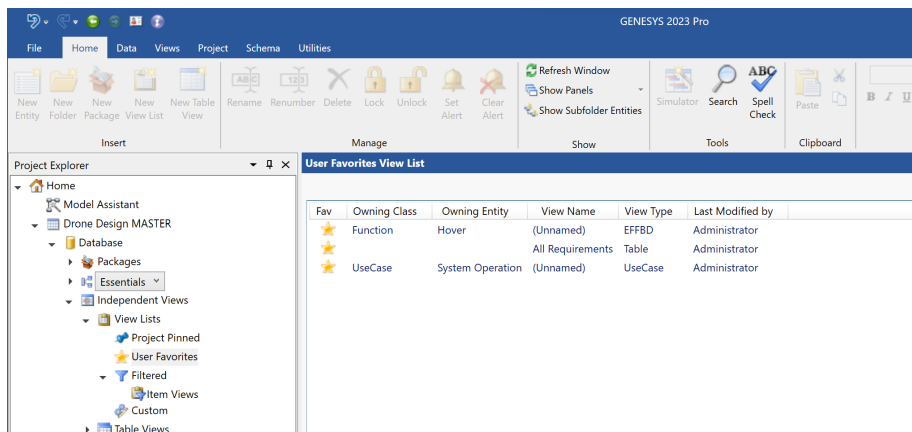
Use the project pin, user favorite star, and view list membership dialog to take advantage of the new *View Lists* leaf of the Independent Views container.

What is New in GENESYS 2023

Project pinned View Lists –a list of views that are “pinned”. Once “pinned,” all users with access to the project will be able to see this list of views. It is designed to allow a team to mark those views that are considered important to most, if not all, of the team. Critical views can be accessed and viewed quickly, directly from the project pinned list.

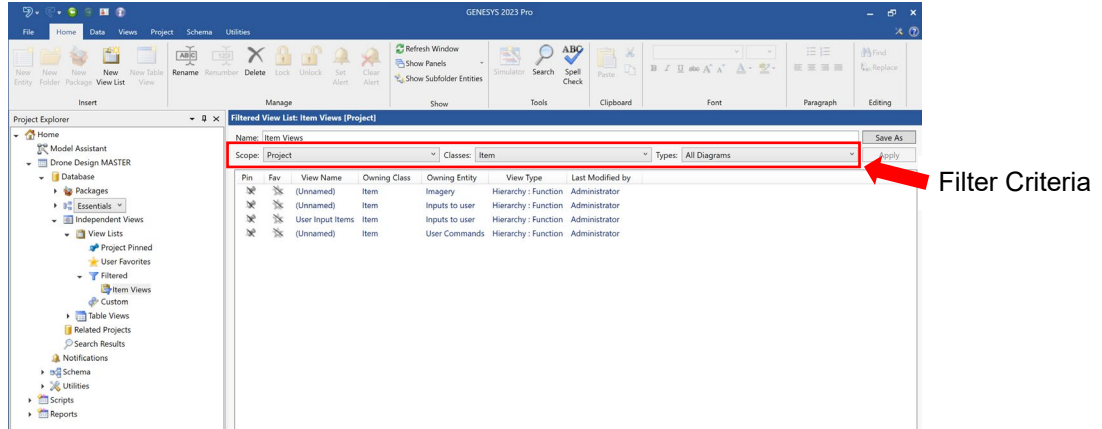


User favorite View Lists - supplies a list of saved views that have been flagged by the user as a favorite. This list is distinctly separate from Project Pinned views. This allows users to flag and then easily find the diagrams they are working on currently or find most useful in their daily work.

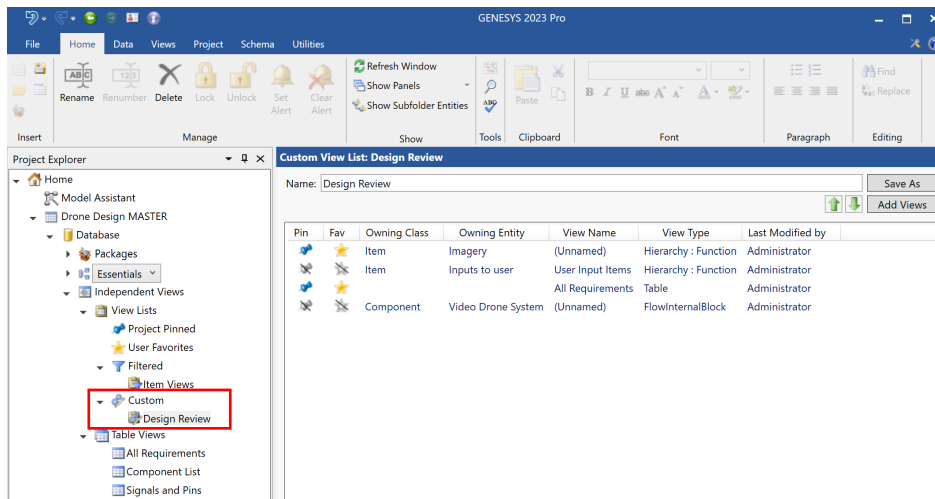


Filtered View Lists - allows a user to create a new list of views based on specified filter criteria. The available criteria include model scope (i.e., project, package, or folder), included classes, and incorporated diagrams. These views are updated dynamically based on actual model content.

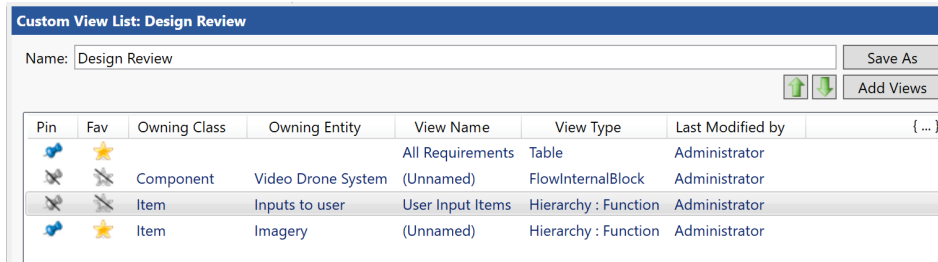
What is New in GENESYS 2023



Custom View Lists - allows a user to manually add specific views to the list with the ability to set a preferred sort order. This allows users to create specific lists for specialized purposes and applications.



Raw Custom List View Sample

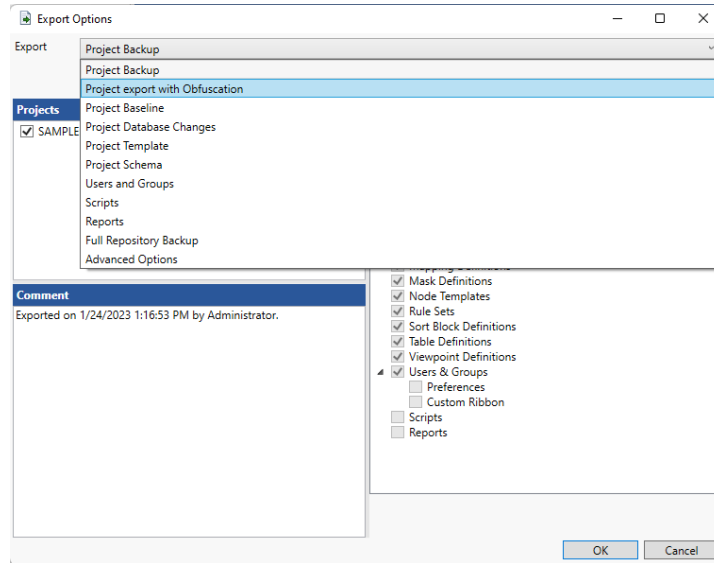


User-sorted Custom List View Sample

For more information on Table Views and View Lists, access the [GENESYS online help](#).

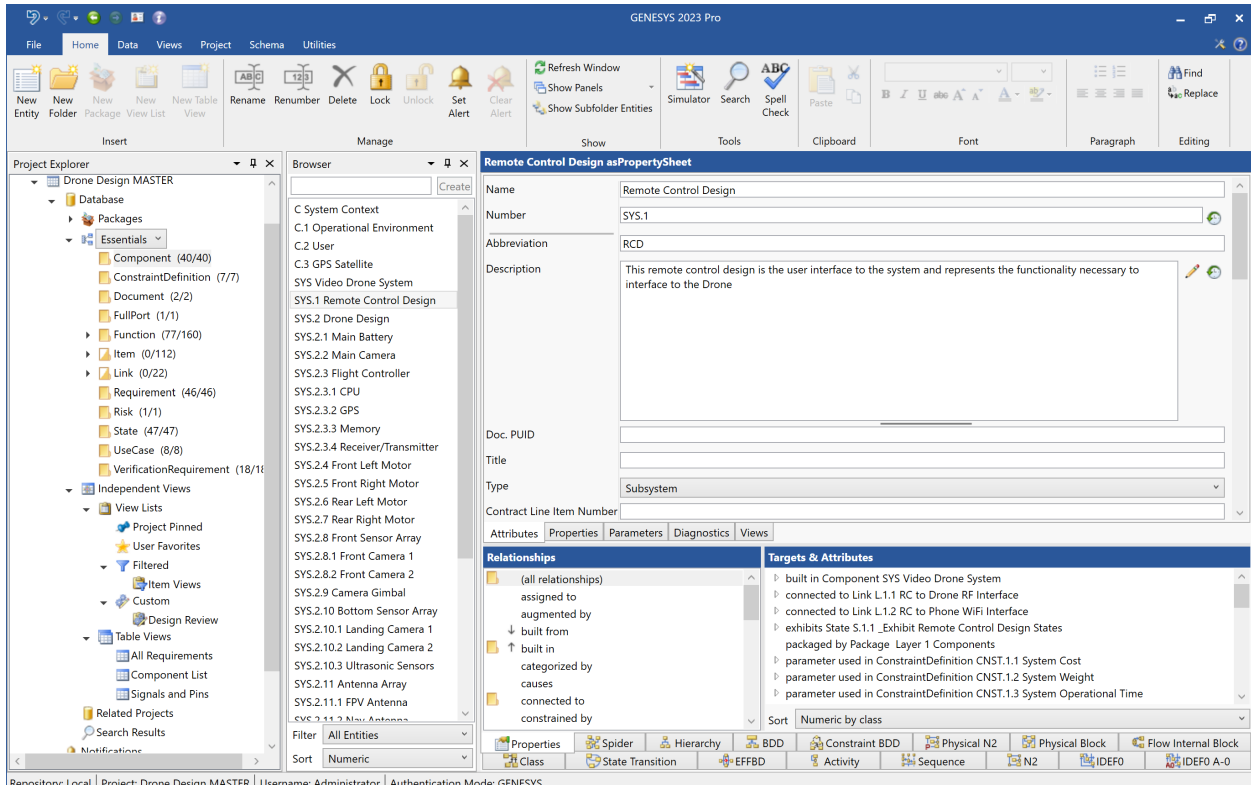
Model Obfuscator

GENESYS models often contain sensitive data or intellectual property that an organization may not want to show. In GENESYS 2023, there is a new capability that allows users to export obfuscated versions of GENESYS models so they can be easily shared with Vitech support.

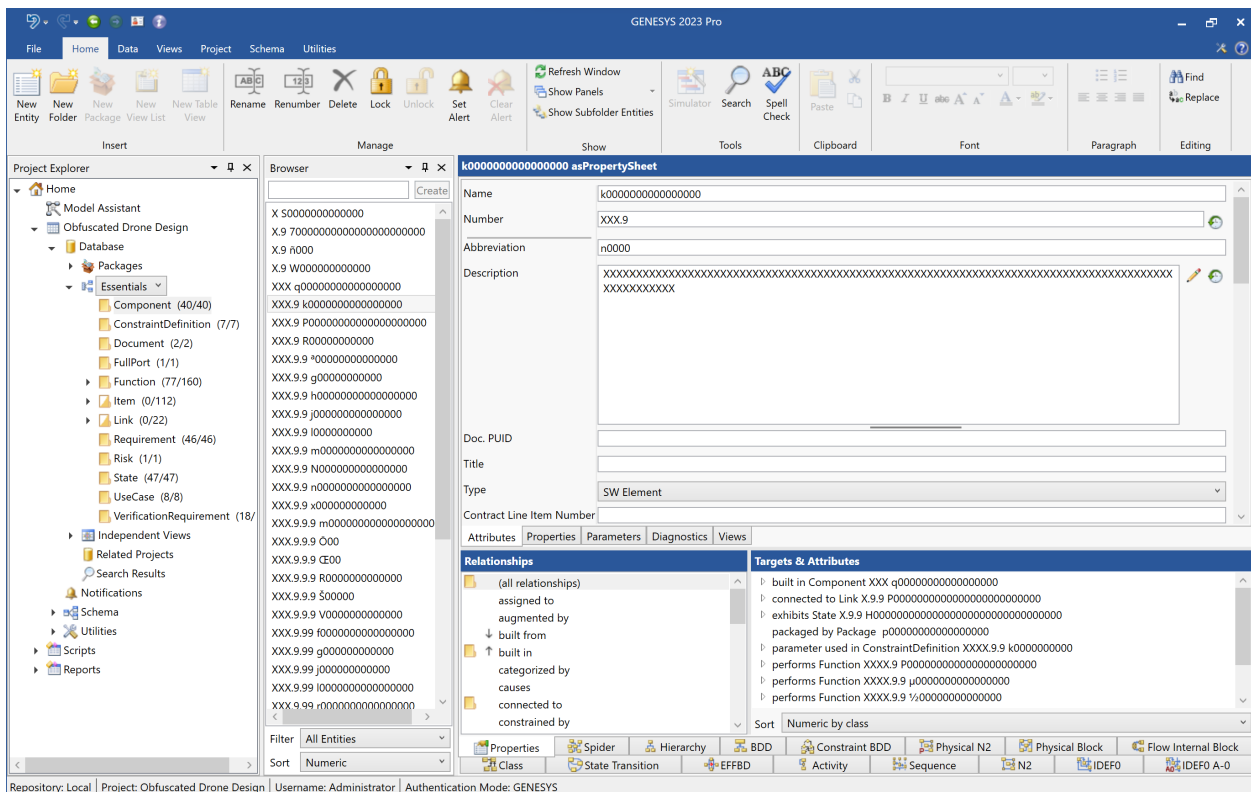


During the process of obfuscation, the model's size and shape are kept as closely as possible to the original, while attribute values including, but not limited to, strings, enumerations, and collections are replaced with random alphanumeric characters. This is not an encryption process that can be decrypted. It is a one-time transformation that redacts data through a random data replacement process. Obfuscated copies of projects can be imported into GENESYS for viewing and analysis. The screens below show a source model before obfuscation and then the results of the process after importing the obfuscated copy of the model.

What is New in GENESYS 2023



Sample Model Before Obfuscation



Sample Model After Obfuscation

What is New in GENESYS 2023

The obfuscation process does not redact certain types of data by default, such as parameters, which the GENESYS simulator may require. Depending on the nature of the problem being experienced with the model, it can be exported with different options that result in varying degrees of obfuscation, as instructed by Vitech support.

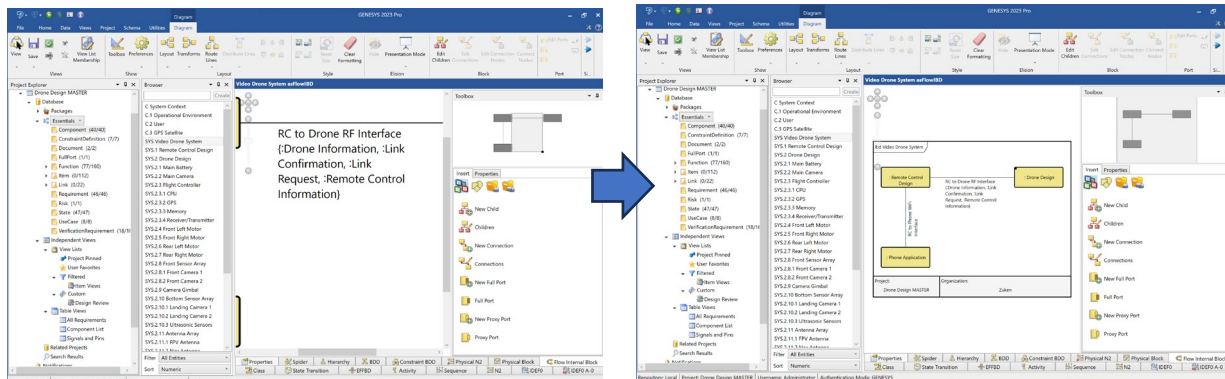
For more information on the Model Obfuscator, access the [GENESYS online help](#).

Zoom Diagram to Fit Window

GENESYS 2023 includes a shortcut when viewing a diagram that both centers and scales the active diagram to fit in the current diagram window. This command can be executed using a single-click in the middle of the Navigation Tool, shown below:



Alternatively, you can also use the standard keyboard shortcut CTRL-W to zoom to fit the diagram to the window. If you wish to zoom to 100%, you can use CTRL-O. The effect of clicking the icon or inputting the keyboard shortcut for zoom to fit is shown in the screens below.



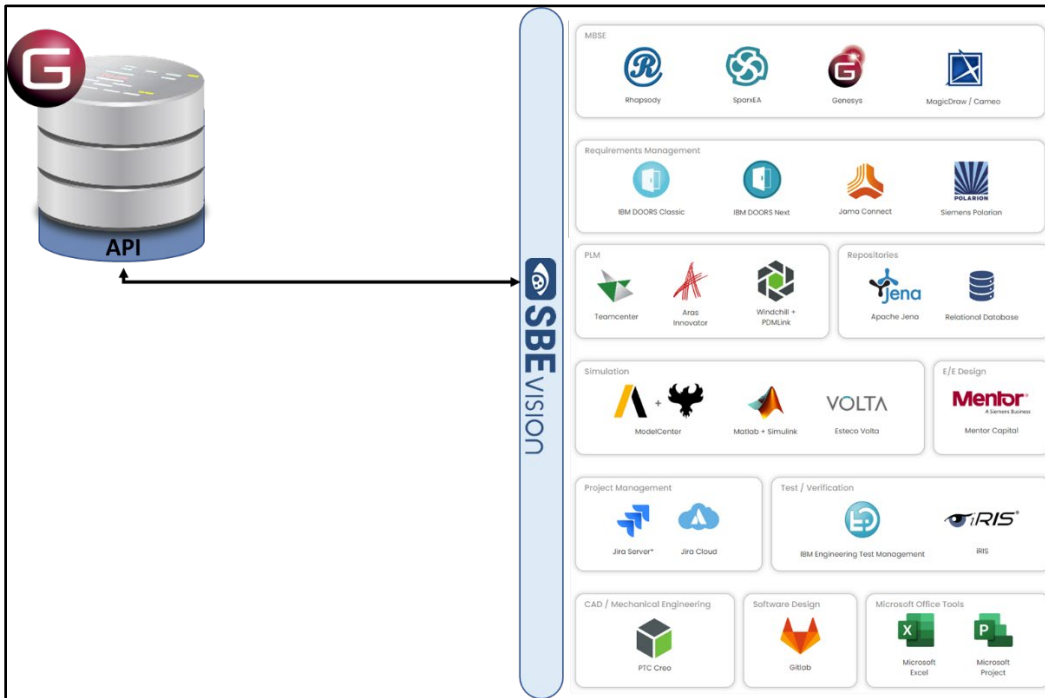
SBE Vision Integration

Today's digital engineering environments require robust connectivity and data exchange to support the needs of engineering organizations. A connected digital engineering environment helps reduce errors, improves efficiency in exchanging data versus manual methods, and helps ensure consistency. Vitech is committed to open, connected, and integrated digital engineering environments.

GENESYS 2023 now includes an adapter for SBE Vision, allowing GENESYS users and model data to take part in the SBE Vision hub and spoke, ontology-based digital thread broker. With the SBE Vision Adapter, GENESYS model data can be published to the SBE Vision bus, allowing systems engineers to share important data with other disciplines or stakeholders in the organization. Likewise, GENESYS can subscribe to data published from other applications onto the SBE Vision bus. Through this mechanism of publishing and subscribing, GENESYS can fully participate in configuration managed data exchange with other products in the SBE Vision ecosystem.

What is New in GENESYS 2023

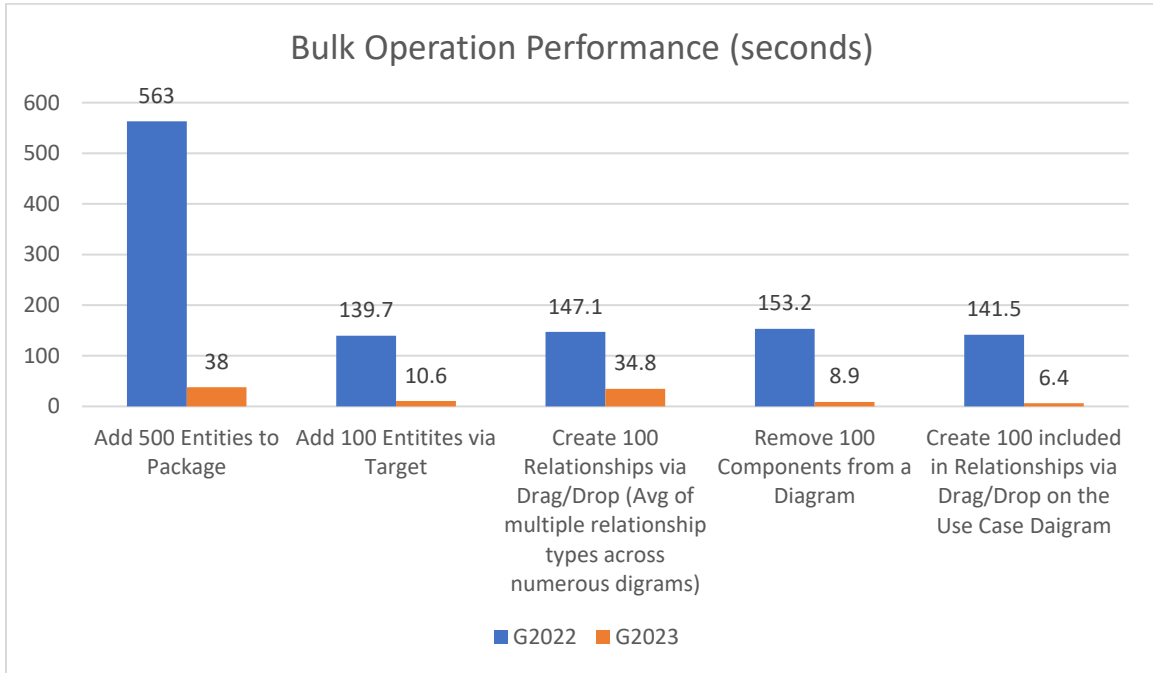
Via SBE Vision, GENESYS can be integrated with PLM, requirements management, simulation, project management, mechanical CAD and other products that connect to SBE Vision, as shown in the diagram below.



For more information on the SBE Vision Adapter, access the [GENESYS online help](#).

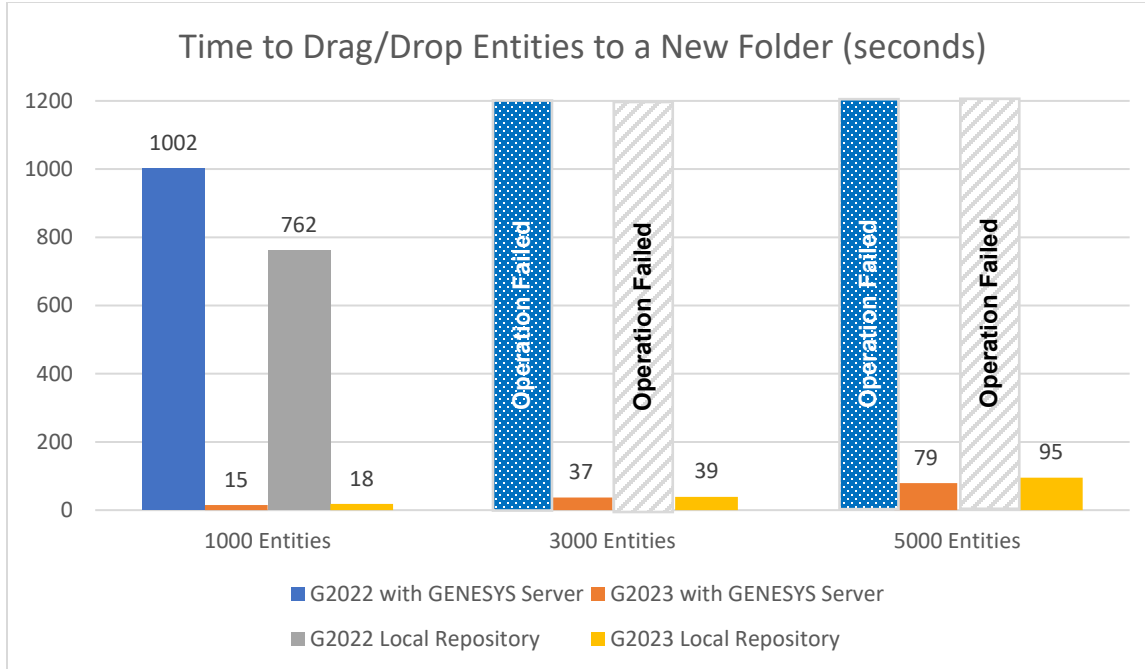
Performance Improvements

A key initiative for each GENESYS release is to find areas for improving performance, especially when working in teams or on large models. In GENESYS 2023, attention was given to improving the performance of bulk operations. The graphs below illustrate the magnitude of the improvements when performing certain operations with GENESYS 2023 over GENESYS 2022.



The chart above shows samples of performance data for different operations. All tests above were done with GENESYS and GENESYS Server as a shared repository. Overall performance has been significantly improved in GENESYS 2023.

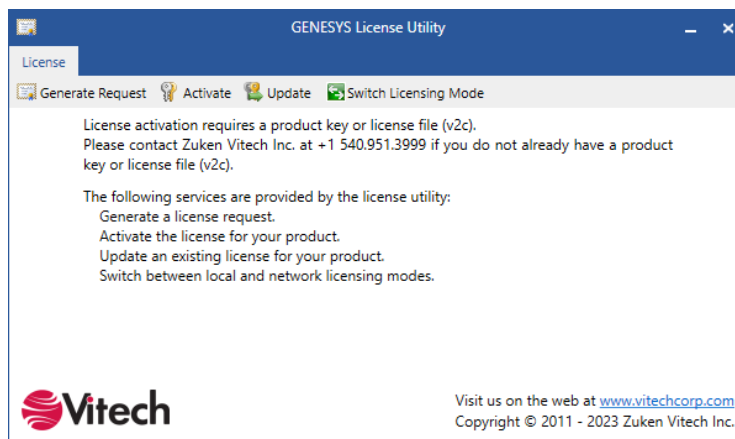
What is New in GENESYS 2023



*For the chart above, GENESYS 2022 failed to complete the move operations with 3000 and 5000 entities. Note that these operations run better in GENESYS 2023 with GENESYS Server than using the local repository. Additionally, performance scales in a nearly linear manner.

Automatic Licensing Updates

GENESYS users can now use the included GENESYS License Utility to automatically update GENESYS software licenses. Instead of going through the previous process of generating the license c2v file and waiting to receive the corresponding v2c which must then be loaded into the GENESYS License Manager, users can now simply launch the GENESYS License Utility, click the Update button, and the utility will query the Vitech license servers, automatically applying licensing changes. Use of this utility requires an outbound internet connection from machine running the GENESYS License Utility and an existing entitlement on the Vitech servers.



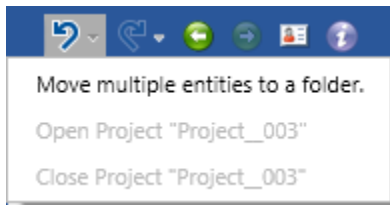
Minor Improvements – Bulk Operation Undo/Redo

Prior to GENESYS 2023, each entity in a bulk operation created an entry in the undo/redo stack. This means that large operations consisting of dozens, hundreds, or even thousands of entities could not easily be undone. In some cases, they could not be undone if the set was too large. In GENESYS 2023, these have been consolidated into a single entity in the undo/redo stack.

Below is a screen shot of the undo/redo stack from GENESYS 2022 after moving 20 entities.



With GENESYS 2023, that same operation now appears as follows:



The entire bulk move operation can be undone or redone with a single click, whereas previously each individual entity would have had to be selected individually.

API Changes

There are two changes to note in the GENESYS 2023 .NET API. The *IProject.BaseViewSetType* property has been removed. Likewise, the *ProjectBaseViewSetType* enumeration this property referred to has also been removed. If your application was referencing either of these two members, the application will need to be updated to be compatible with the GENESYS 2023 API.

These two members were also removed from the GENESYS REST API. As a result, the REST API has been updated to v2, which is embedded in the URLs (e.g., <http://localhost:8080/api/v2/projects>).

GENESYS 2023 Resolved Issues

The table below contains a list of issues that were resolved in GENESYS 2023. They are grouped by area and provide a description of the main observed behavior or symptom resolved in this release. Please note that GENESYS 2023 includes bug fixes from GENESYS 2022 SP1 and SP2. These service packs were only made available to customers reporting specific issues.

Reference	Description / Resolution Notes
Administrative Tools	
Disassociating the active user causes unhandled exception. (19313)	The user now receives a message box indicating the problem with disassociating the user.
API	
The Requirement Commenter API sample project is not using the correct default port number when connecting to a remote repository. (18681)	The sample now uses the correct default port – 39131.
Ansys ModelCenter Connector	
The default path for the Analyses Location is incorrect. (20309)	The default Analyses path has been updated to the user’s AppData\Roaming\Phoenix Integration\MCRE\analyses which matches the latest version of ModelCenter.
Cross-project Relationships	
An unhandled exception occurs attempting to delete an entity with a cross-project relationship that is not resolvable. (20292)	The exception, “Unable to find the project specified by “[GUID],”” was occurring attempting to capture undo information for the relationship delete where the target entity of the relationship was not resolvable in the target project. This command now properly accounts for the case where either the target entity or project is not resolvable.
The importer aborts with a “DB key violation” exception after deleting an entity with an unresolvable cross-project relationship. (20307)	If an entity has a cross-project relationship that is unresolvable and that entity is deleted, attempting to import the entity again will result in a “DB key violation” exception causing the importer to abort. Previously, deleted cross-project relationship data was not being full expunged after undoable command were executed. This has been corrected, and the error no longer occurs.
An unhandled exception occurs attempting to open the property sheet of an unresolvable cross-project relationship target. (19879)	The exception, “Unable to cast object of type 'Vitech.Genesys.Client.RelationEntity' to type 'Vitech.Genesys.Client.IEntityProxy’” was occurring attempting to open the property sheet for an unresolvable cross-project relationship target. The issue has been resolved, and the exception no longer occurs. A read-only local copy of the target entity is now

What is New in GENESYS 2023

Reference	Description / Resolution Notes
	properly displayed in the property sheet when unresolvable.
Diagram Views	
Unhandled exceptions and/or application crash occurs when attempting to logout with the diagram open. (19275, 19370, 19398, 19839)	The exception, "Cannot access a disposed object." was occurring attempting to execute the Logout command with various diagram views open. These issues have been corrected, and the exceptions no longer occur.
Spider – The user receives an erroneous prompt when attempting to change the hierarchy definition. (18937)	If the user was viewing a Spider diagram an attempted to set the hierarchy definition using the Custom definition menu option, the "save changes" prompt may be displayed more than once while setting up a custom hierarchy definition even if nothing was changed. The confirmation dialog is now only displayed when something was changed by the user.
Spider – An unhandled exception occurs after updating the Levels setting and hierarchy definition. (18936)	The exception, "The port owner is not part of this graph", would occur if the Levels setting was increased and the hierarchy definition was changed multiple times subsequently. The Levels setting was also not being maintained properly when the view was closed and reopened. Some of the nodes were not properly expanded after reopening. Both issues have been addressed. The exception no longer occurs and the view properly redisplay the correct number of Levels when the diagram is reopened.
Spider – The candidate locations for line labels is unexpectedly limited when changing the Show Relationship Labels option. (19030)	If the "Show Relationship Labels" option was changed, the candidate locations that the user can place the relationship labels on lines was limited to only several positions. Prior to changing this setting, the user was able to position the label anywhere along the line freely. This issue has been corrected, and the user is able to position the labels anywhere along the lines after changing the Show Relationship Labels option.
Use Case – An unhandled exception occurs deleting a use case in the diagram which uses the "described by" relationship. (19762)	The exception, "The specified entity is not in the database", would occur deleting a use case which was on the diagram due to a "described by" relationship. This issue has been corrected and the exception no longer occurs when performing this action.
General	
Application terminates after attempts to create 1,000 entities using the default name. (19250)	The application terminated unexpectedly attempting to generate the default name for the 1,000 th requirement. The application now handles generating the 1,000 th default name properly without failing.
An unhandled exception occurs attempting to set a dependent parameter binding to a locked entity (19367)	The exception, "The [entity name] is locked and cannot be updated." The error message is not presented to the

What is New in GENESYS 2023

Reference	Description / Resolution Notes
	user in a message box, and the unhandled exception no longer occurs.
The Enumeration attribute definition editor has buttons enabled when the project is not in schema mode. (19444)	All controls are now properly disabled when the user is not able to make changes to the definition.
The Capability Architecture Development baseline schemas have one-way relationships defined on some classes (20152)	<p>The following relations were defined without complement relations:</p> <ul style="list-style-type: none"> • RequirementGroup > impacted by > Nexus – This has been resolved by adding the complement relation Nexus > impacts > RequirementGroup in the GENESYS 2023 baseline schema. • ProgramElement > accomplished by > VerificationActivity – This has been deleted from the GENESYS 2023 baseline schema. <p>To resolve both issues above, migrate your project schema to the Capability Architecture Development 2023 baseline schema using the project schema migration utility available in the Project ribbon tab.</p>
The mouse cursor remains constant after selecting a network license via the network license dialog. (19396)	After selecting a network license, the mouse cursor would no longer update to show sizing and other potential operations throughout the application. The mouse is now reset to normal operation after selecting a network license during the login process.
Undo fails to restore component relationship (19463)	After executing an Undo operation of a Delete Folder and Entities command, the relationships lists are not correct for entities which were not originally deleted but had relationships with deleted entities. This was a transient problem which could be resolved by closing the reopening the project. Now, the relationships lists are dynamically updated by the system without manually reopening the project.
Import	
Conflicts occur importing schema extension files into projects using older baseline schemas. (17244, 17245, 17247)	When importing schema extensions into projects using older baseline schemas such as Capability Architecture Development 2021 R2, conflicts such as “An error occurred while attempting to import class "Function": Removing inherited possible values from a definition is not allowed”, would occur. The issue has been corrected, and the conflicts no longer occur. The schema importer now only attempts to import changes to classes and their attribute and parameter definitions rather than always attempting to import everything in the class.

What is New in GENESYS 2023

Reference	Description / Resolution Notes
The importer aborts with an Execution Timeout error when attempting to import large project files (19784)	The exception, "Execution Timeout Expired. The timeout period elapsed prior to completion of the operation, or the server is not responding", occurred when attempting to import a project file containing over 86,000 entities and 67,000 relationships. The importer no longer aborts with the timeout exception, and large project files can be imported successfully.
Project Utilities	
Filters – An unhandled exception occurs when using the Target criteria in an entity filter (19323)	The exception, "Object reference not set to an instance of an object", occurred when changing the conditions of an entity such that it no longer matched the criteria specified in the active filter. This issue has been corrected, and the exception no longer occurs. Instead, the entity is properly removed from the filtered list.

GENESYS 2022 SP2 Resolved Issues

The table below contains a list of issues resolved in GENESYS 2022 SP2. These have been rolled into GENESYS 2023.

Reference	Description / Resolution Notes
Schema Editing	
Ending schema editing causes application to become unresponsive. (19148)	The dialog box informing the user of an ongoing operation occasionally never terminated after ending schema editing. The dialog box now properly terminates.
SBE Vision Digital Thread Connector (Tech preview)	
A conflict message for restricted attribute permissions lacks sufficient details. (18929)	The conflict message did not provide the name of the entity or attribute which was being updated in GENESYS. The conflict message now includes the name of the entity and attribute that is being updated in GENESYS along with the name of the source entity and corresponding property from the digital thread.
Repeated imports are adding duplicate entities. (19150)	If an entity is imported from the digital thread to the same GENESYS project more than once, duplicate entities were occasionally being created. If the identical entity already exists in GENESYS, the existing entity will now be updated instead of duplicated.
Only the Administrator can import the SBE Vision Digital Thread schema extension. (19247)	Only the Administrator account could be used to import the SBE Vision Digital Thread schema extension. All users can now import the schema

What is New in GENESYS 2023

Reference	Description / Resolution Notes
	extension with appropriate permissions to the target project.
The attribute list does not display in order in the schema extension. (18933)	The new attributes created by the schema extension were not being displayed in the proper order in all entity property sheets after importing the schema extension. The importer has been updated to correctly set the order specified in the file being imported for classes which inherit new attributes from parent classes.
The SBE Digital Thread Wizard uses plural forms for single-selection drop-down lists. (18972)	The SBE Digital Thread Wizard has been updated to use the singular form for labels that correspond to a single selection in drop-down lists.
The SBE Digital Thread Wizard becomes unresponsive after clicking <i>Run</i> . (18931)	Especially for larger data sets, it was not apparent that a process was still running after clicking <i>Run</i> . A dialog box is now displayed during import processing to notify users of an ongoing operation.
Diagrams	
The Enhanced Functional Flow Block Diagram (EFFBD) contains incorrect z-order for windows. (18932)	When allocating a Component entity to functions on a branch using the drag-drop method, the <i>Remove existing allocation?</i> prompt appeared behind the <i>Creating Relationships</i> dialog. This made it appear as if GENESYS was working while it was waiting for a response from the user. The <i>Remove existing allocation?</i> prompt is now properly shown in the foreground.
When drag-drop is used to place an image node onto a diagram, the image appears when the dialog is canceled. (18513)	Closing the dialog before selecting an image will now properly cancel the operation and no image will be inserted.
Filters	
An <i>Object Reference</i> error occurs when applying a filter to an entity in certain circumstances. (18981)	Adding a basis of relationship target to an entity selected in the <i>Project Explorer</i> would cause an <i>Object Reference</i> error if the <i>Unaddressed Requirements</i> filter was also selected. This error no longer occurs.
Import	
The conflict message that appears if the user does not have <i>Full Control</i> permissions when importing into a project is incorrect. (19375)	The conflict message stated that the user requires <i>Administrative</i> permissions. The message has been updated to indicate that <i>Full Control</i> permission is required.
User Interface (UI)	
The external graphics path is inconsistently labeled in the software. (18985)	The external graphics path was inconsistently labeled in the software. On the project <i>Property Sheet</i> , it was labeled the <i>External Graphics Path</i> . In the <i>Edit Graphics Reference Editor</i> , used when editing an entity's <i>Node Image</i> property, it was

What is New in GENESYS 2023

Reference	Description / Resolution Notes
	labeled the <i>Base Path</i> . Both locations now use the label, <i>External Graphics Path</i> .
A tooltip does not display for the Help button in the main ribbon. (18989)	A tooltip has been added for consistency with the other buttons in this area of the ribbon.

GENESYS 2022 SP1 Resolved Issues

The table below contains a list of issues resolved in GENESYS 2022 SP1. These have been rolled into GENESYS 2023.

Reference	Description / Resolution Notes
New Features	
SBE Vision Digital Thread Connector (Tech Preview)	Facilitates data exchange with the SBE Vision Digital Thread.
Connectors	
Excel Connector – Cells Incorrectly Marked as Changed (18545)	The Excel Connector incorrectly marked cells as changed when a user navigated to a different cell after focusing on a cell in an unmodifiable column.
Excel Connector – <i>Data Save</i> Error when Inserting a Row (18517)	When inserting a row into Excel with a Number attribute value containing an integer value, Excel reported a <i>Data Save</i> error.
Excel Connector – Updates to Parameter Fields Incorrectly Restricted (18535)	The Excel Connector was preventing parameter fields from updating if the entity had any type of source binding (i.e., Design, Requirement, or Verification).
Excel Connector – Consecutive Publish Changes Required to Update Parameters (18684)	The Excel Connector required a second execution of the Publish Changes command to update entity parameter values.
Excel Connector – Object Reference Error (18685)	Executing a Publish All command after loading a table definition produced an <i>Object reference</i> error.
Reports	
SDD Report – Verification Events Not Displayed (18491)	The SDD Report, <i>Section 12.1 (Verification Cross-Reference Matrix)</i> and <i>Section 12.2 (Verification Events)</i> were not displaying Verification Events.
Licensing	
Network License Manager – Incorrect Count of Client Licenses (18445)	The Network License Manager was incorrectly counting Client licenses as Service licenses when licensing GENESYS through the Client License Selection screen.
API Network License – Not Resolving with Multiple Machines on Network (18555)	The API license was not resolving when multiple machines on the network contained API licenses
UCL Session Limit – Error Message (18854)	The error message that displayed when the UCL session limit was reached was confusing. Clarified the wording to:

What is New in GENESYS 2023

Reference	Description / Resolution Notes
	"The UCL session limit of [n] in the service has been reached. Unable to service your request until an existing session logs out."
Cross-Projects	
Cross-Project Entity Statistic – Non-Zero after Cross-Projects (18506)	The Cross-Project Entities statistic was non-zero after cross-projects were deleted from the Repository.
Database	
Erase Database Command – Failed for Cross-Project Relationships (18560)	The Erase Database command failed where cross-project relationships existed between two projects in the repository.
Package	
Packages – GENESYS crashed after Executing Reports/Scripts (18524)	<p>GENESYS crashed when the following reports and/or script was executed on a Package contained in a recursive hierarchy:</p> <p>Reports -</p> <ul style="list-style-type: none"> • Reporting Toolkit <ul style="list-style-type: none"> ○ Component Hierarchy Report ○ Functional Hierarchy Report ○ Requirements Hierarchy Report ○ Work Breakdown Structure (WBS) Report • Risk Report • Attribute History Report <p>Script -</p> <ul style="list-style-type: none"> • Utilities <ul style="list-style-type: none"> ○ IdentifyContextEntities



2270 Kraft Drive, Suite 1600
Blacksburg, Virginia 24060
540.951.3322 | FAX: 540.951.8222
Customer Support: support@vitechcorp.com
www.vitechcorp.com